

MINI JAWLOCK



ORIGINAL MOUSE TAIL, METAL INSERT, FLEXIBLE SEAL WITH THIN STRAP

The original Mini JawLock was developed to suit the security needs of a wide range of applications. It has a metal jaw locking mechanism which is highly resistant to tampering by heat to pull-back-release.

Industry



Material

- Seal Body - Polypropylene (PP)
- Locking Jaw - Metal

Format Mat of 10s

Tensile Strength > 12kg-f/26.5lbs-f

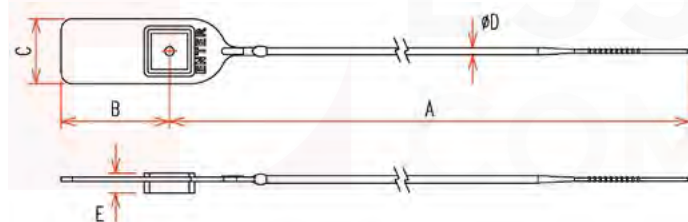
Temperature -20 to 60°C/ -4 to 140°F

Features

- Variable loop reinforced with metal locking jaw
- Thin round smooth sealing strap (Ø2.0mm),
- Side tear-off options for 150mm, 200mm, 250mm

Benefits

- Enhanced tampering security and greater locking strength
- Designed to fit small apertures plus easy removal with tool



Product Dimension

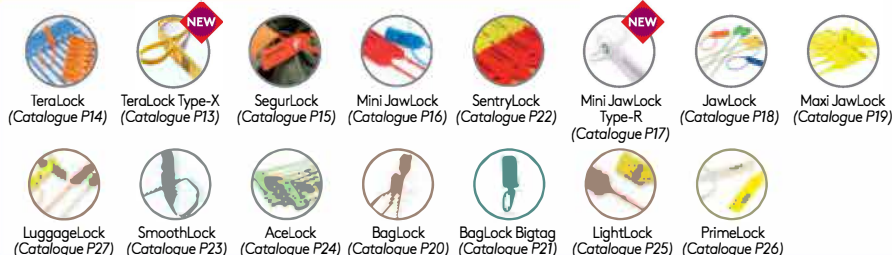
Type	Product Code	SN	L	SB	B	A mm [inch]	B mm [inch]	C mm [inch]	D mm [inch]	E mm [inch]	Removal	Tear off
Mini JawLock 150	MJ15NA	X	X	X		150 [5.90]	30 [1.18]	18 [0.71]	2 [0.08]	5.5 [0.22]	Tool	No
	MJ15SA	X	X	X							Hand	Yes
	MJ15NB	X	X		X	150 [5.90]	50 [1.97]	18 [0.71]	2 [0.08]	5.5 [0.22]	Tool	No
	MJ15SB	X	X		X						Hand	Yes
Mini JawLock 200	MJ20NA	X	X	X		200 [7.87]	30 [1.18]	18 [0.71]	2 [0.08]	5.5 [0.22]	Tool	No
	MJ20SA	X	X	X							Hand	Yes
	MJ20NB	X	X		X	200 [7.87]	50 [1.97]	18 [0.71]	2 [0.08]	5.5 [0.22]	Tool	No
	MJ20SB	X	X		X						Hand	Yes
Mini JawLock 250	MJ25NA	X	X	X		250 [5.90]	30 [1.18]	18 [0.71]	2 [0.08]	5.5 [0.22]	Tool	No
	NJ25SA	X	X	X							Hand	Yes
	MJ25NB	X	X		X	250 [5.90]	50 [1.97]	18 [0.71]	2 [0.08]	5.5 [0.22]	Tool	No
Mini JawLock 300	MJ30NC	X	X	X		300 [5.90]	30 [1.18]	18 [0.71]	2 [0.08]	5.5 [0.22]	Tool	No
	MJ30ND	X	X		X	300 [5.90]	50 [1.97]	18 [0.71]	2 [0.08]	5.5 [0.22]	Tool	No
Mini JawLock 400	MJ40NC	X	X	X		300 [5.90]	30 [1.18]	18 [0.71]	2 [0.08]	5.5 [0.22]	Tool	No
	MJ40ND	X	X	X		300 [5.90]	50 [1.97]	18 [0.71]	2 [0.08]	5.5 [0.22]	Tool	No

Carton Dimension

Type	Quantity	L mm [inch]	W mm [inch]	H mm [inch]	Volume m³ [ft³]	Weight kg [lb]
Mini JawLock 150	1,000	240 [9.45]	232 [9.13]	218 [8.58]	0.0121 [0.4287]	2.69 [5.92]
Mini JawLock 200	1,000	290 [11.42]	232 [9.13]	215 [8.46]	0.0145 [0.5108]	2.70 [5.94]
Mini JawLock 250	1,000	315 [12.40]	225 [8.86]	210 [8.27]	0.0156 [0.5506]	2.52 [5.54]
Mini JawLock 300	1,000	365 [14.37]	225 [8.86]	210 [8.27]	0.0182 [0.6424]	2.74 [6.03]
Mini JawLock 400	1,000	455 [17.91]	225 [8.86]	210 [8.27]	0.0227 [0.8009]	3.24 [7.13]



PULL TIGHT SEALS | Flexible & Versatile



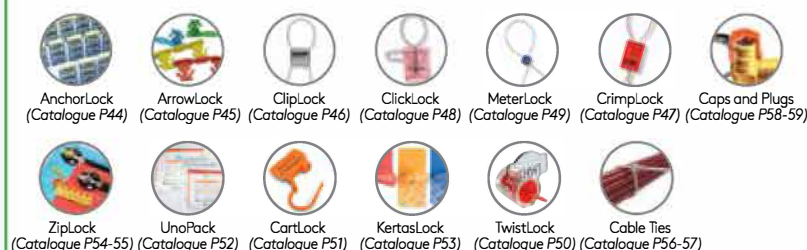
FIXED LENGTH SEALS | Simple & Efficient



BARRIER SEALS | Tough & Secure



SPECIAL PURPOSE SEALS | Unique & Practical



To find the right security seals for your applications, download catalogue on our website at www.essentrasecuringsolutions.com

QUANTUM CODE

The key solution towards reducing and eliminating vulnerability along your supply chains

A clone-proof encrypted AR Code that is printed directly onto our security seals for smart tracking and brand protection solutions. By combining both security seals and advanced digital technologies, Essentra Components provides innovative securing solutions, offering higher visibility of supply chain movement and customizable authentication levels for ultimate asset and cargo protection.

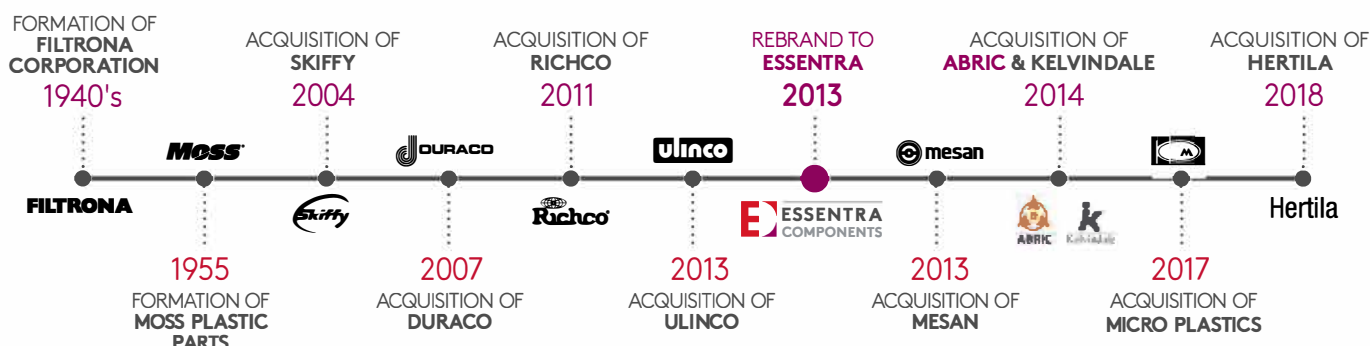
BENEFITS

- Direct printing onto security seals, plastics and metal types
- AR Code, visually sophisticated and different from regular QR Code (anti-copy)
- Patented digital-watermark with blockchain
- Latest banking-grade security encryption that can only be authenticated with proprietary designed mobile APP
- Unique and encrypted-coding for each security seal, allowing effective track and trace capabilities
- Push notification via mobile App messenger, email, SMS of live updates

FEATURES

- Saves time for cargo verification with immediate on-site authentication
- Easy detection of possible overruns, tampering or pilferage
- Effective management of distribution channels, tightening leakages along the supply chain
- Track and trace of cargo journey to the end consumers. Real-time event check point or continuous journey map

THIS IS ESSENTRA COMPONENTS



Essentra Components is a global market leading manufacturer and distributor of plastic injection moulded, vinyl dip moulded and metal items. Operating in 29 countries worldwide, 12 manufacturing facilities and 47 sales and distribution centers, we offer a wide range of high quality tamper evident security seals at competitive prices. Besides manufacturing a large variety of standard products, our plants are equipped to meet your various customised demands as well as developing new products to meet your needs. Our strengths lie in high volume production, small batch delivery, various customisation options, Innovative product solutions, and quick lead time.

Find your perfect securing solutions partner today at sales@essentrasecuringsolutions.com or call our global sales & distribution offices

Malaysia +60 3 6207 3333 | Singapore +65 6841 3266 | Thailand +66 38 627 500-8

